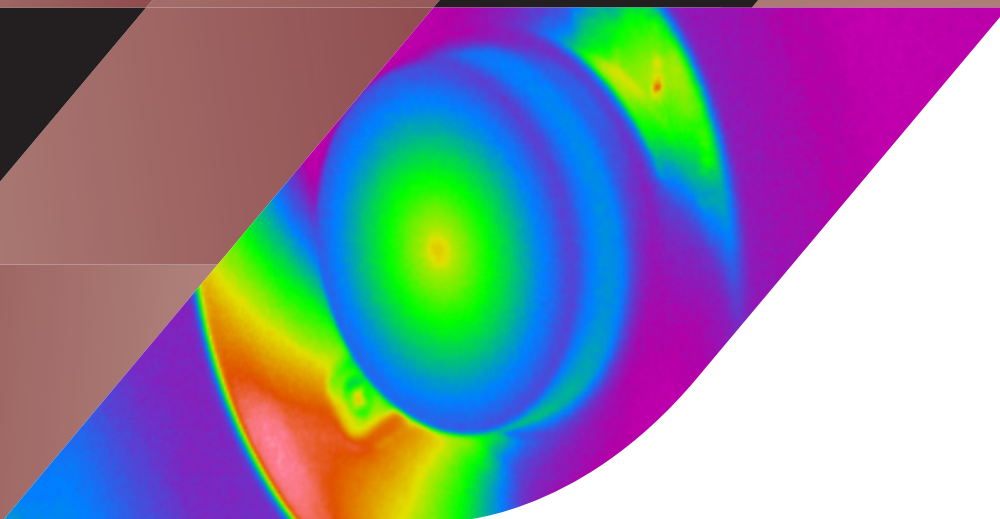


# LWIR-640

THERMAL IMAGING SOLUTIONS



0 to 1000 °C / 32 to 1832 °F



**LAND**  
**AMETEK**<sup>®</sup>  
PROCESS & ANALYTICAL INSTRUMENTS



QUALITY CUSTOMER SOLUTIONS

# LWIR-640

THERMAL IMAGING SOLUTIONS

## AMETEK LAND HAS BEEN MANUFACTURING PRECISION MEASURING EQUIPMENT SINCE 1947.

We are specialists in non-contact temperature measurement and combustion monitoring with applications across diverse industries such as steel and glass making, power generation and cement manufacture.

As part of AMETEK Process & Analytical Instruments Division since 2006, our customers benefit from our worldwide AMETEK sales and service team.

**WITH INCREASING DEMAND FOR IMPROVED PRODUCT QUALITY AND EFFICIENCY, ENERGY SAVING, PREDICTIVE MAINTENANCE AND EMISSION REDUCTION, THERMAL IMAGING CAMERAS AND SYSTEMS PLAY AN IMPORTANT ROLE IN MODERN AND INDUSTRIAL PROCESSING.**

THE NEW LWIR-640 LONG-WAVELENGTH THERMAL IMAGER BUILDS ON MORE THAN 20 YEARS OF THERMAL IMAGING EXPERIENCE, EXPANDING THE MARKET-LEADING RANGE OF AMETEK LAND TEMPERATURE MEASUREMENT SOLUTIONS.

It provides a full temperature measurement range of 0 to 1000 °C (32 to 1832 °F) in two ranges with a choice of different optics and lenses.

An integrated webserver with multiple I/O options enables the camera to be used autonomously or easily integrated into new or existing process control systems. The webserver provides easy camera access, control and setup, using a standard browser.

The LWIR-640 measures and streams live true-temperature images at up to 60 frames per second, providing high-precision temperature measurements and thermal profiles to continuously control, document, and visualise industrial processes.

### INDUSTRIAL THERMAL IMAGING

Designed for use in harsh industrial and environmental conditions, the LWIR-640's smart, Industry 4.0 capabilities, bi-direction digital interfaces and on-board I/O provide reliable and robust, real-time thermographic measurement and imagery in industrial processes.

### ADVANCED IMAGE RESOLUTION

The pixel resolution of 640 x 480 pixels and the high thermal resolution deliver uniquely clear and detailed thermal images and videos, at up to 60 Hz frame rate. This unmatched image quality supports highly accurate process visualisation and control.

### INNOVATIVE SOFTWARE ANALYSIS

Advanced IMAGEPro image and data processing software offers real-time analysis of thermal images, giving users an exceptional level of understanding and control of their process. It also enables monitoring and configuration of up to 16 imagers.

**LWIR-640 is AMETEK Land's smart long-wavelength thermal imaging solution for a range of industrial applications including automation, process control, machine vision, flare stack monitoring, hot spot detection, medical, critical vessel refractory monitoring, petrochemical, and food and mineral processing.**

## FIELD OF VIEW LENS OPTION

Distance	1 m			2.5 m			5 m			10 m			15 m		
	HFOV x VFOV	Width	Height	IFOV (centre)	Width	Height	IFOV (centre)	Width	Height	IFOV (centre)	Width	Height	IFOV (centre)	Width	Height
50° x 37°	0.93 m	0.68 m	1.5 mm	2.33 m	1.70 m	3.6 mm	4.66 m	3.39 m	7.3 mm	9.33 m	6.79 m	14.6 mm	13.99 m	10.18 m	21.9 mm
25° x 19°	0.44 m	0.33 m	0.7 mm	1.11 m	0.83 m	1.7 mm	2.22 m	1.65 m	3.5 mm	4.43 m	3.30 m	6.9 mm	6.65 m	4.95 m	10.4 mm



# SPECIFICATION & DESIGN

## 1: HIGH SPATIAL AND THERMAL RESOLUTION

Providing unmatched image quality for process visualisation and control

## 2: INTEGRATED WEBSERVER

Allowing easy access for remote configuration, I/O setup and image monitoring setup via web browser

## 3: SMART FUNCTIONALITY

INDUSTRY 4.0 ready for autonomous operation and can be integrated into existing process controls

## 4: INDUSTRY READY

IP65/NEMA 4 sealing – industrial enclosure design. Optional ATEX and class/division enclosures available

## 5: MULTIPLE I/O OPTIONS

On board analog and digital I/O for easy process integration and extended functionality

## 6: OPTIC OPTIONS & MOTORISED FOCUS

A range of optics (FOV) available, all with remotely accessible motorised focus



# FEATURES & BENEFITS

**INDUSTRIAL THERMAL IMAGER** - For use in harsh industrial and environmental conditions, providing continuous reliable temperature measurements

**HIGH TEMPERATURE MEASUREMENT ACCURACY & REPEATABILITY** - Unmatched image homogeneity across the entire image

**ADVANCED IMAGE RESOLUTION & QUALITY** - High pixel and thermal resolution, providing 640x480 camera pixels and NETD of < 50 mK (0.05 °C)

**EXTENSIVE ACCESSORIES** - Hazardous location and general purpose enclosures for cooling and protection plus further mechanical and electrical accessories available

# TYPICAL APPLICATIONS

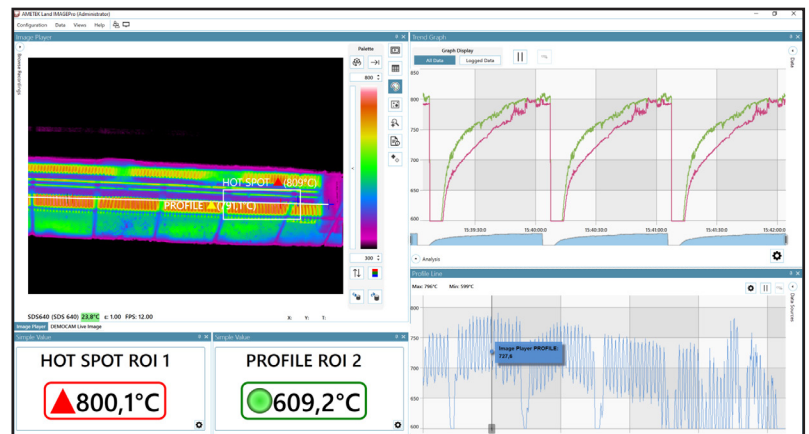
Automation	Process Control
Machine Vision	Flare Stack Monitoring
Hot Spot Detection	Medical Imaging
Critical Vessel Refractory Monitoring	Food and Mineral Processing
Petrochemical Processing	

# IMAGEPRO

The innovative IMAGEPro software is an advanced image processing software for controlling, monitoring, analysing and capturing imager data.

IMAGEPro is a Windows PC software system that enables custom configuration of LAND imagers and offers advanced analysis and visualisation of temperature data. Free 30-day trial available.

With the ability to monitor and control up to sixteen imagers, IMAGEPro offers real-time analysis for AMETEK Land thermal imagers. It gives users an exceptional level of understanding and control of their process.



# SUPPORTS UP TO 16 THERMAL IMAGERS

## SPECIFICATIONS

### IMAGER UNIT

<b>Measurement Range:</b>	0-500 °C / 32-932 °F 100-1000 °C / 212-1832 °F
<b>Pixel Resolution:</b>	640 x 480
<b>Pixel Size / Pitch:</b>	17 µm
<b>Spectral Response:</b>	8 to 14 µm
<b>Max Frame Rate:</b>	60 fps* / 7.5 fps
<b>Detector:</b>	640 x 480 Uncooled Amorphous Silicon detector
<b>Optic (HFOV x VFOV):</b>	50° x 37° / 25° x 19°
<b>Focus Range:</b>	Min 0.3 m to infinity (motorised focus)
<b>Accuracy:</b>	1.5% or 2 °C of reading
<b>NETD:</b>	40 mk (@ 20 °C) (-20 to 120 °C) 7.5 Hz
<b>Dimensions:</b>	80 x 80 x 222 mm (max) / 3.14 x 3.14 x 8.7 in (including lens)
<b>Power Rating:</b>	12 to 24 V DC, +/-10% 12W / IEEE 802.3 at PoE+
<b>Weight:</b>	1.6 kg / 3.5 lbs
<b>Ambient Temperature:</b>	-20 to 60 °C / -4 to 140 °F (0 - 95 % humidity, non-condensing)
<b>Environmental Rating:</b>	IP65/ NEMA 4
<b>Compliance:</b>	EMC (EN 61326-1)

### CONNECTIVITY AND SERVICES

<b>Digital Connections:</b>	M12 X coded 8way connector: 10/100/1000 Ethernet & IEEE 802.3 at PoE+
<b>Analog Connections:</b>	8 pin Binder Connector: 2pins - 12-24V DC Power Input 6 pins Functions can be assigned to internal image processing algorithms 1 x 4 -20mA output 1 x 4 -20mA output OR relay output 1 x 4 -20mA input OR Digital Input OR relay output Camera Web Browser for alignment & internal image processing analog I/O setup
<b>Signal-LED:</b>	Visible on rear of camera instrument. 3 x LED - Power / Status, Ethernet Comms & Camera internal temperature
<b>Service:</b>	Water, instrument air for cooling and window purging using optional enclosures

### SMART FUNCTIONALITY

<b>Integrated Webserver:</b>	Remote access via Gbit ethernet interface Integrated webserver provides live thermal image
<b>Autonomous Operation:</b>	3 ROI's and configuration of integrated I/O's for full autonomous operation

### THERMAL IMAGING PSU MODULE (UL APPROVED)

<b>Components &amp; Connections:</b>	Power supply, GBit Ethernet communications (switch)/ PoE+, Fibre optic data connection
<b>Environmental Rating:</b>	IP65 / NEMA 4
<b>Size:</b>	380 x 380 x 211 mm / 15 x 15 x 8.3 in
<b>Weight:</b>	15 kg / 33.07 lbs
<b>UL Approval:</b>	Listed to UL508A & CSA-C22.2 No. E499440

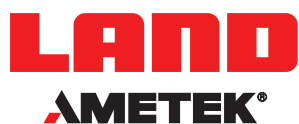
### IMAGE PROCESSING

<b>Integrated Webserver:</b>	Integrated webserver accessible via standard web browser
<b>Software:</b>	IMAGEPro, IMAGEPro Application Specific (e.g Asset Monitor)
<b>Workstation:</b>	PC-Workstation (option)
<b>Interfacing:</b>	Open Data Interface, Modbus TCP, Moxa I/O unit



### STANDARD ACCESSORIES

<b>Accessories (optional):</b>	Thermal Imaging PSU Modules (UL Approved), Process Imager Power Supply, Industrial Housing Assembly and Purge, Light Housing with Purge, Cables, Brackets, Blower System, Software and Workstation
--------------------------------	--

\*60Hz instruments are subject to different export restrictions in different authorities and countries around the world. All sales must be subject to export licence review.



### CONTACT US

 [www.ametek-land.com](http://www.ametek-land.com)  
 [land.enquiry@ametek.com](mailto:land.enquiry@ametek.com)

